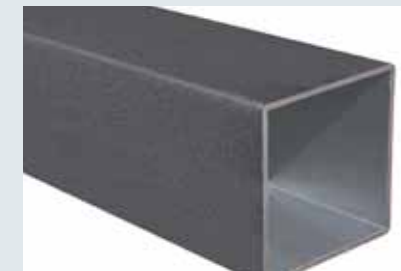


Aluminium



Napoli Braccio



I La praticità della soluzione a braccio laterale interamente in acciaio e alluminio verniciato antracite mantiene il design raffinato inalterato nel tempo.

UK Handy cantilever parasol entirely made of epoxy lacquered steel and aluminium, keeps its refined design unchanged.

D Praktischer Pendelschirm ganz aus pulverbeschichtetem Stahl und Aluminium. Unveränderliches und raffiniertes Design.

F Parasol pratique avec bras excentré en acier et aluminium vernis qui n'altère en rien le design.

E Práctica sombrilla completamente fabricada en acero y aluminio lacados, reservado para diseños inalterados y refinados.

NL Praktische zwevende parasol geheel in geepoxideerd staal en aluminium. Uniek door zijn geraffineerde vormgeving.

20. Napoli Braccio

I

Ombrellone a braccio laterale. Telaio in alluminio e componenti in acciaio; verniciato a polveri colore antracite. Accessori in nylon.

F

Parasol bras deporté. Armature en aluminium vernis, composants en acier couleur gris anthracite. Accessoires en nylon.

UK

Cantilever parasol. Frame in coated aluminium and steel components epoxy lacquered anthracite grey. Accessories made of nylon.

E

Parasol de brazo lateral. Herraje: aluminio y componentes de acero, recubierto con polvo de antracita. Accesorios de nylon.

D

Pendelschirm. Gestell aus pulverbeschichtetem Aluminium und Bestandteile aus Stahl Farbe Anthrazitgrau. Zubehoer aus Nylon.

NL

Vrijhangende parasol. Mast en baleinen: grijs geëpoxeerd aluminium en staal.

	COD	MEASURES		CHARACTERISTICS					
		KG	M ³						
3,0x3,0	C3030 NAB	50	0,20	75x75	ALU DARK	8	ALU DARK	18x30	
2,0x3,0 NEW	C2030 NAB	48	0,20	75x75	ALU DARK	8	ALU DARK	18x30	
	C3020 NAB								
3,0x4,0	C3040 NAB	52	0,21	75x75	ALU DARK	8	ALU DARK	18x30	



SCOLARO Mario & Fabio srl

Via Liguria, 197 - 35040 Casale di Scodosia (PD)
 ITALY - TEL. +39 0429 656687 - FAX. +39 0429 657874
 info@scolaro-parasol.it - www.scolaro-parasol.it

FINISHING								COLOUR RANGE								OPTIONAL		BASES					
									ACRYL 350 GR										N°2 BC5151 N°6 BC5050	N°4 BC5151 N°12 BC5050	N°2 BV5050	FISSAGGIO TERRA INGROUND FIX	
									A1	A1	A2	A3	A6	A7	S1								
•	•	•	•	•	•	•	•	•									•	•					
•	•	•	•	•	•	•	•	•		-	-	-	-	-	-	-	-	•	•				
•	•	•	•	•	•	•	•	•									•	•					

Ombrellone a braccio in alluminio.

TELAIO: Interamente in alluminio e acciaio verniciati a polveri colore grigio antracite. Sostegno verticale sez. 75x75mm.

Stecche in alluminio sezione 18x30 mm, facilmente intercambiabili abbinare al nuovo sistema di corone in plastica (brevettato Scolaro) per aumentare la resistenza e durata, semplificare la manutenzione e migliorare il design.

Con aggancio singolo dedicato per ogni stecca. Tutti gli accessori sono zincati antiruggine e verniciati a polveri colore antracite. Apertura e chiusura con meccanismo a manovella.

Stecca blocco antivento per rendere l'ombrellone più stabile e resistente in caso di vento e con possibilità di inclinazione.

Inclusa base in metallo girevole 360°C.

TESSUTO: Acrilico Dralon 350gr/m2 impermeabilizzato e trattato antimuffa garantito Teflon. Con camino antivento. Con o senza volant.

Side post aluminum parasol

FRAME: Aluminum and steel structure epoxy coated anthracite color. Side post section 75x75mm.

Easily interchangeable strong aluminum ribs, section 18x30 mm, with a new plastic crown (patented by Scolaro) in order to increase the resistance and timing, simplify the maintenance and to improve the design.

Ribs are properly fixed to the crown one by one. All components are epoxy coated anthracite color. Easy opening and closing with crank.

With wind stop rib for a better stability of the parasol in windy condition and to allow the inclination of the parasol.

360° rotating metallic base is included.

FABRIC: Acrylic Dralon 350gr/m2 waterproof Teflon and anti-mold treated. With wind cap. Available with and without valance.



.Dimensione (metri)
 .Dimensions (meters)
 .Masse (Meter)
 .Dimensions (metrès)
 .Dimensiones (en metros)
 .Afmeting in (meters)



.Stecche
 .Ribs
 .Streben
 .Baleines
 .Varillas
 .Baleinen



.Piastrre cemento
 .Cement slabs
 .Kiesbetonplatten
 .Dalles ciment
 .Planchas de cemento
 .Betontegel



.Viteria in inox e ottone nichelato
 .Screws in Stainless steel and nickel plated brass
 .Edelstahlschrauben und vernickeltes Messing
 .Visserie inox et laiton nickelé
 .Tornillos en acero inoxidable y bronce niquelado
 .Schroeven van rvs en vernikkeld messing



.Codice
 .Code
 .Artikelcode
 .Code
 .Código
 .Artikelcode



.Set canaline
 .Raingutter set
 .Rегerinnen
 .Set gouttières
 .Canalizador Lluvias
 .Set regengoten



.Fodero
 .Cover bag
 .Schutzhuelle
 .Housse
 .Forro
 .Afdekhoes



.Tipo finitura della struttura/sostegno/componenti
 .Finishing for frame/structure/components
 .Ausführung des Gestells/der Struktur/der Bestandteile
 .Finition armature/structure/composants
 .Tipo de acabado de la estructura/Soportes/componente

Pag. 66



.Lunghezza
 .Length
 .Laenge
 .Longueur
 .Longitud
 .Lengte



.Con base/supporo
 .With base/support
 .Mit Staender/Huelse
 .Avec base/support
 .Con base/ soporte
 .Inclusief standaard



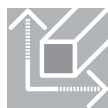
.Doppia carrucola
 .Double pulley
 .Doppelter Seilzug
 .Double poulie
 .Doble polea
 .Dubbelle katrollen



.Colore dei componenti/stecche
 .Component/Ribs colour
 .Farbe der Bestandteile und Streben
 .Couleur des composants et baleines
 .Color de los componentes ò piezas/Varillas ò listones



.Peso
 .Weight
 .Gewicht
 .Poids
 .Peso
 .Gewicht



.Sezione stecche
 .Rib section
 .Strebenprofil
 .Section baleines
 .Sección varillas
 .Profiel baleinen



.Sistema telescopico
 .Telescopic system
 .Teleskopsystem
 .Système telescopique
 .Sistema telescópico
 .Telescoop systeem



.Stecca con sistema "easy change"
 .Ribs with "easy change" system
 .Streben mit "easy change" System
 .Baleines avec "easy change" système
 .Varillas con sistema de " cambio fácil"
 .Baleinen met het "easy change" systeem



.Volume (m3)
 .Volume (m3)
 .Volumen (m3)
 .Volume (m3)
 .Volumen (m3)
 .Volume (m3)



.Camino antivento
 .Wind cap
 .Windfang
 .Souffle
 .Chimenea antiviento
 .Windvang



.Sistema retrattile
 .Retractile system
 .Einziehbares System
 .Système retractile
 .Sistema retráctil
 .Inklapbaar systeem



.Ø Palo (mm)
 .Ø Pole (mm)
 .Ø Mast (mm)
 .Ø Mat (mm)
 .Diametro mm (asta)
 .Ø Mast (mm)



.Volant
 .Valance
 .Volant
 .Volant
 .Volant
 .Faldón
 .Volant



.Base girevole a 360°C
 .Revolving base 360°C
 .360°C drehbarer Staender
 .Base tournant 360°C
 .Base giratoria 360°
 .360° draaibaar



.Massima Stabilità Ottenibile
 .Maximum Obtainable Stability
 .Maximal Erhaeltliche Stabilitaet
 .Maximum De Stabilité Realisable
 .Maxima Estabilidad Posible
 .Maximaal Bereikbare Stabiliteit



.Sezione sostegno (mm)
 .Support section (mm)
 .Mastprofil (mm)
 .Section support (mm)
 .Sección soporte (mm)
 .Mast (mm)



.Blocco antivento
 .Wind stop
 .Windstop
 .Block antivent
 .Freno para el viento
 .Windstop



.Inclinazione fino a 20°
 .Inclination up to 20°
 .Neigung bis zu 20°
 .Inclination jusqu'à 20°
 .Inclinación hasta 20°



.Peso consigliato in condizioni normali
 .Recommended weight in normal condition
 .Empfohlenes gewicht unter normalen bedingungen
 .Poids recommande dans des conditions normales
 .Peso recomendado en condiciones normales
 .Aanbevolen gewicht onder normale omstandigheden



.Ottomatatura
 .Brassfinishing
 .Vermessigungen
 .Laiton doré
 .Terminaciones doradas
 .Koper beslag



.Con meccanismo manovella
 .With winding mechanism
 .Mit Kurbelmechanismus
 .Avec mécanisme manivelle
 .Con manivela
 .Met opwindmechanisme



.Inclinazione fino a 60°
 .Inclination up to 60°
 .Neigung bis zu 60°
 .Inclination jusqu'à 60°
 .Inclinación hasta 60°



.Peso minimo richiesto
 .Minimum ballast required
 .Erforderliches mindestgewicht
 .Poids minimum requis
 .Peso minimo requerido
 .Minimaal vereist gewicht